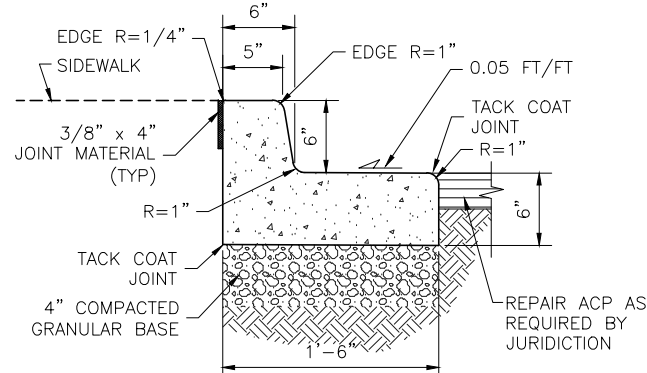


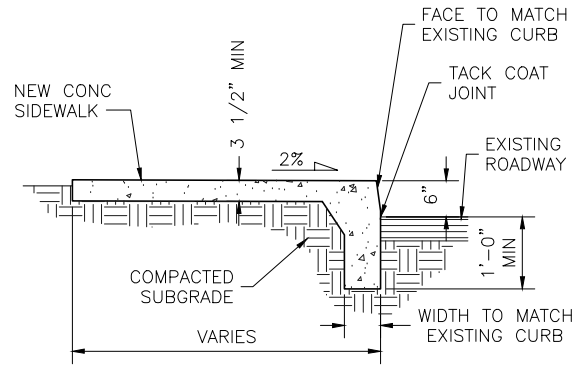
HEAVY CURB & GUTTER

DETAIL 2A
SCALE: NONE



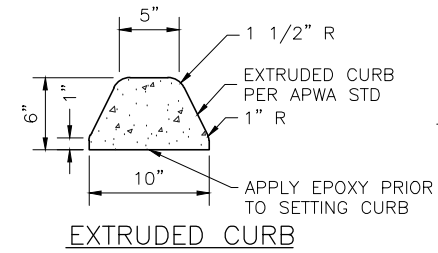
CURB & GUTTER

DETAIL 2
SCALE: NONE



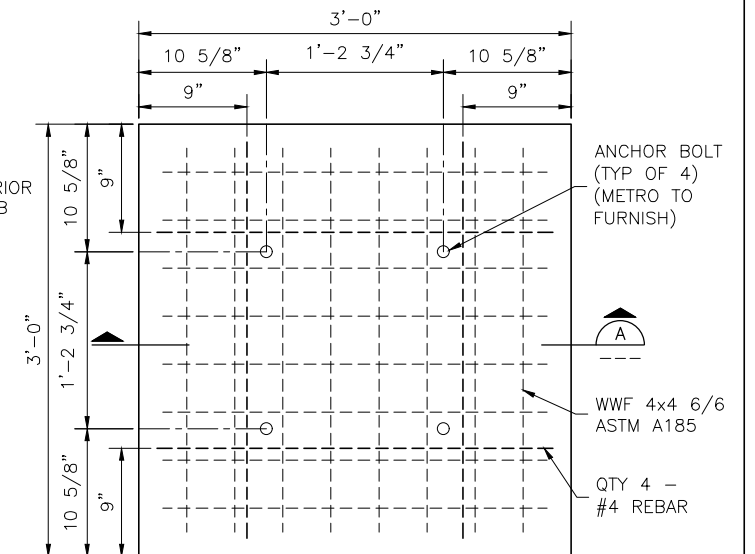
**MONOLITHIC SIDEWALK/
CURB**

DETAIL 3
SCALE: NONE



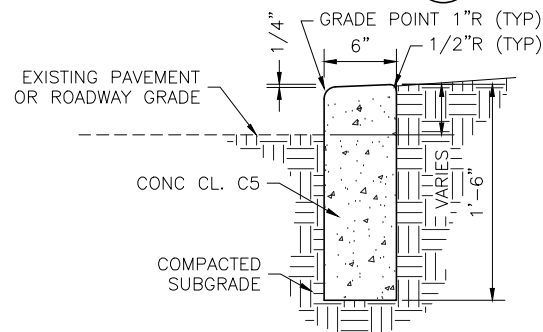
EXTRUDED CURB

DETAIL 1
SCALE: NONE



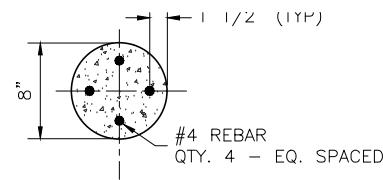
LITTER RECEPTACLE PAD PLAN

DETAIL 4
SCALE: NONE



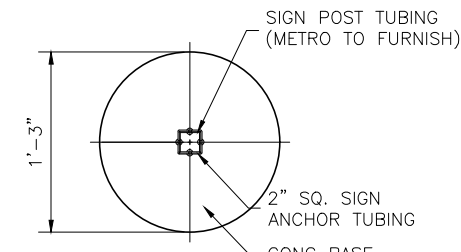
DEEP CURB

DETAIL 5
SCALE: NONE



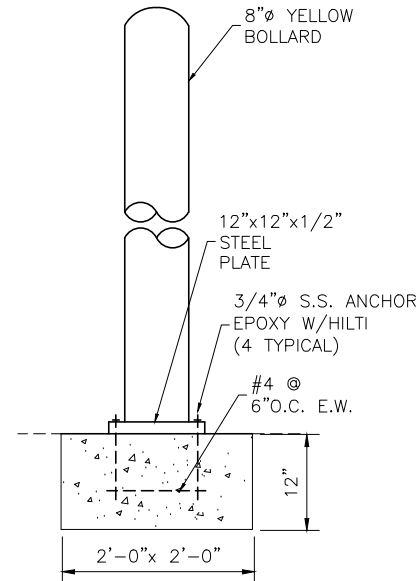
CONCRETE BOLLARD

SECTION C
SCALE: NONE



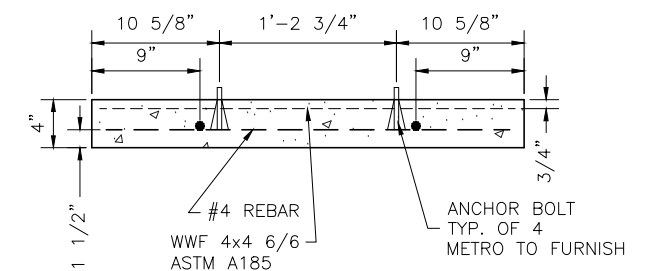
BUS SIGN FOUNDATION PLAN

SECTION D
SCALE: NONE



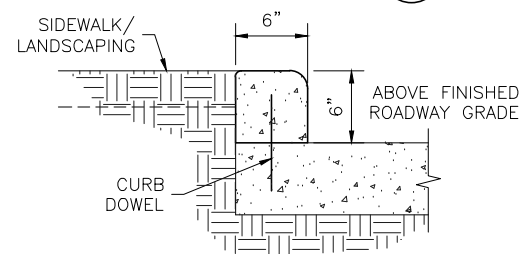
**SURFACE MOUNTED
BOLLARD CONCRETE FOOTING**

DETAIL 10
SCALE: NONE



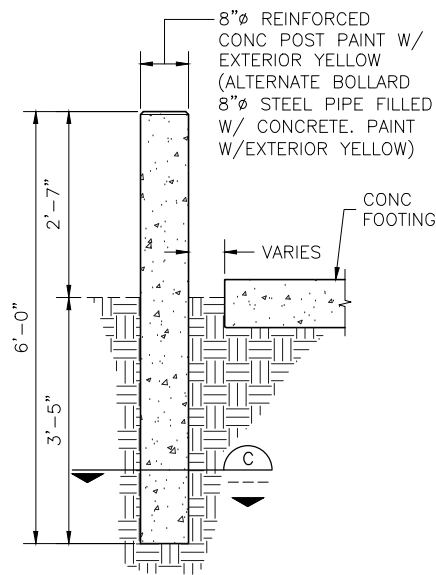
LITTER RECEPTACLE PAD

SECTION A
SCALE: NONE



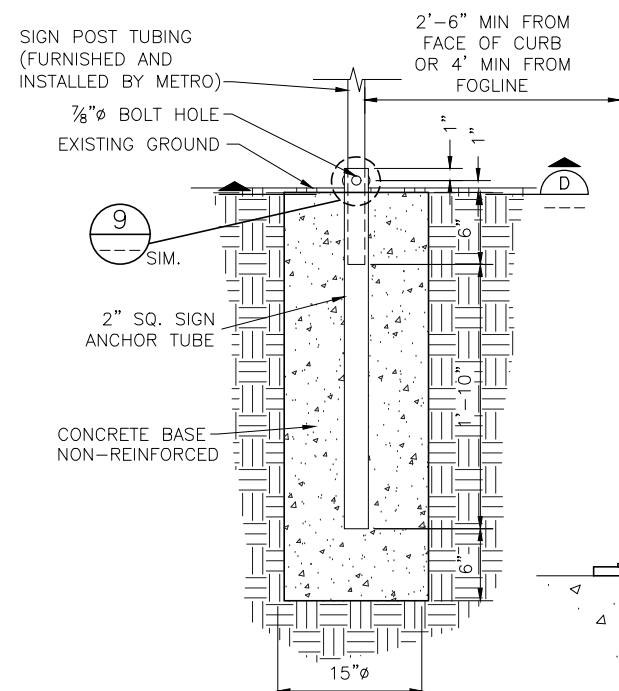
DOWELED CURB

SECTION B
SCALE: NONE



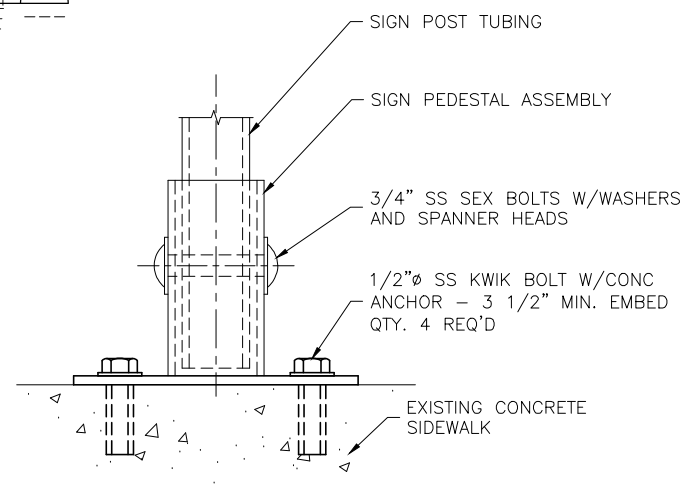
BOLLARD

DETAIL 8
SCALE: NONE



BUS SIGN FOUNDATION

DETAIL 6
SCALE: NONE



BUS SIGN PEDESTAL MOUNT

DETAIL 9
SCALE: NONE

LITTER RECEPTACLE PAD NOTES

1. SAWCUT AS REQUIRED, FOR THE CONCRETE PAD.
2. CONCRETE PAD TO BE CAST IN PLACE.
3. CONCRETE PAD TO BE INSTALLED LEVEL AND PARALLEL WITH THE SHELTER FOOTING OR LANDING PAD.
4. JOINT PER DET 3/D101 TO ISOLATE EDGES FROM PAVEMENT, SIDEWALKS, OR OTHER STRUCTURES.

SIGN POLE NOTES

1. CONCRETE MIX TO BE CLASS C-5.
2. METRO WILL PROVIDE NEW ANCHOR TUBING AND DRIVE RIVETS.
3. RESTORE AREA IN KIND.
4. INSTALLATION FOR RELOCATION OF STREET SIGNS AND SIGNS OTHER THAN BUS SIGNS SHALL MATCH THE EXISTING INSTALLATION AND JURISDICTIONAL STANDARDS.

KCMT 2021-2022 STANDARD DETAILS

No.	REVISION	BY	APPD	DATE



Know what's below.
Call before you dig.

DESIGNED:	APPROVED:
K. CHANG YUEN	P. ENG
L. ANDERSON	PROJECT NO.:
K. CHANG YUEN	CONTRACT NO.:
C. ASQUITH	



METRO TRANSIT CAPITAL DIVISION
TRANSIT PASSENGER FACILITIES - IMPROVEMENTS

SECTIONS AND DETAILS FOR
BOLLARDS, SIGNS & FOOTING FOUNDATIONS
CURBS, GUTTERS & SIDEWALKS

DATE:
05/2022
DRAWING NO.:
D109
SHEET NO. OF
17 20

I:\DOT\kingcounty\dot\transit\CCCAD_Folders\Projects\passenger_facilities\standard_details\2021-2022\standard_details\0109.dwg | Layout: D109
 PLOTTED: May 19, 2022 9:03:09am | By: dbernet
 XREFS: KCMTD-BORDER.dwg | IMAGES: