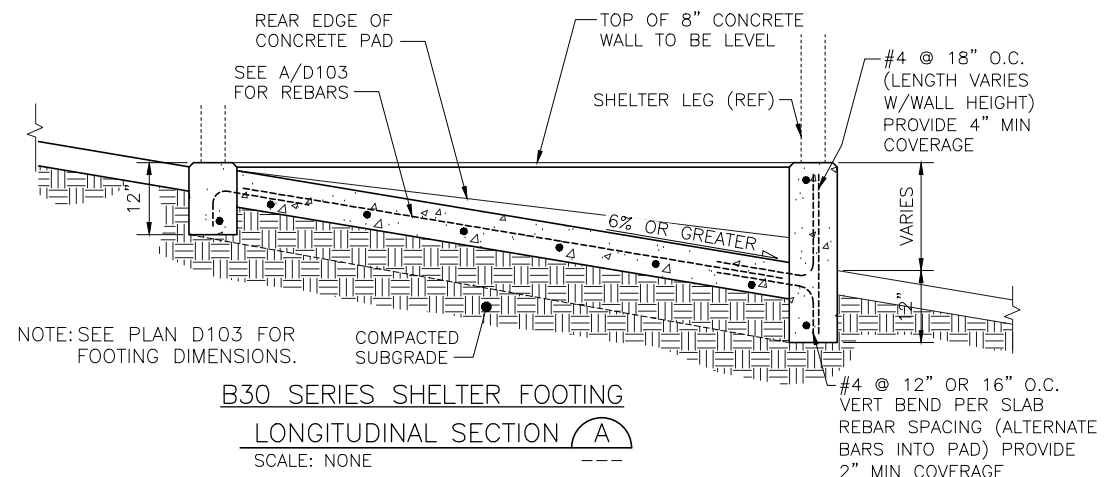


GENERAL NOTES

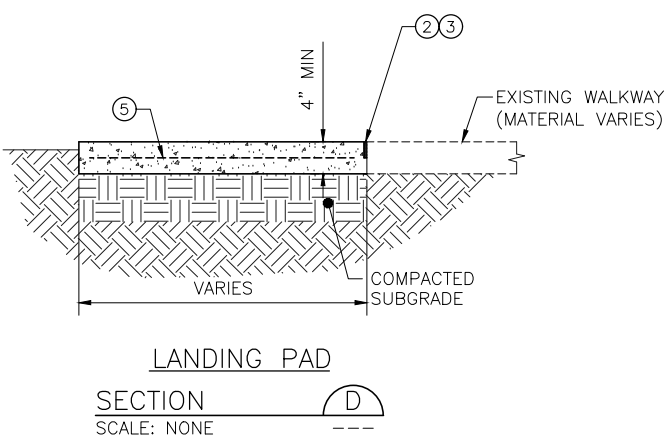
1. NEW WALKWAYS AND LANDING PADS SHALL BE BUILT TO MATCH WITH EXISTING SURFACE TO MAINTAIN NATURAL DRAINAGE COURSES. TYPICAL PASSENGER LANDING PAD DIMENSIONS SHALL BE AS SHOWN ON THE PLANS AND AS REQUIRED TO MATCH EXISTING SIDEWALK JOINTS OR SCORES WHERE APPLICABLE.

CONSTRUCTION NOTES

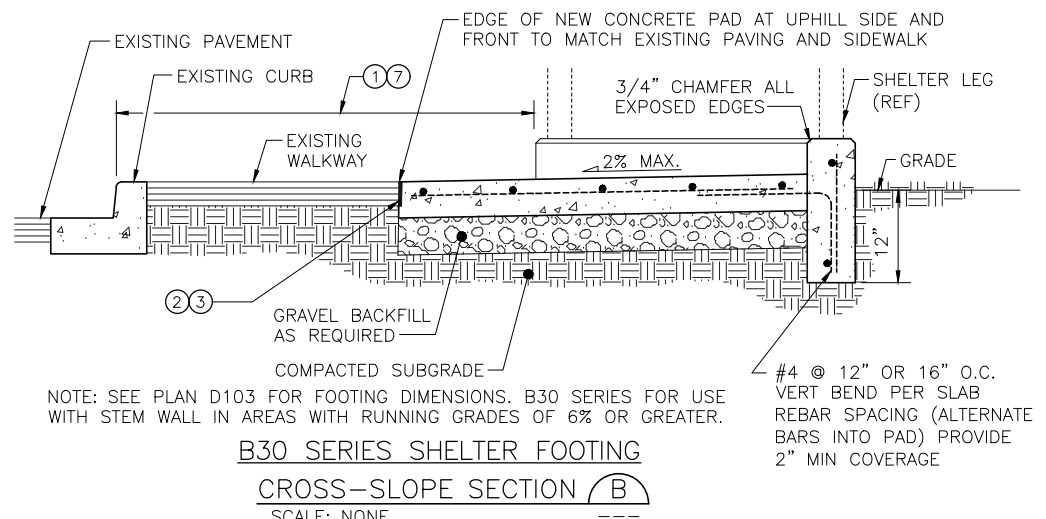
1. FOR ADA, MINIMUM HORIZONTAL CLEARANCE BETWEEN FACE OF CURB AND FACE OF ANY STRUCTURE SHALL BE 4 FT. UNLESS OTHERWISE NOTED ON DRAWING.
2. JOINT PER DET 3/D101 TO ISOLATE EDGES FROM PAVEMENT, SIDEWALKS, OR OTHER STRUCTURES.
3. SAWCUT EXISTING PAVEMENT TO STRAIGHT VERTICAL LINES TO PLACE NEW CONSTRUCTION ELEMENTS.
4. CLASS 1/2" HMA OR AS REQUIRED BY LOCAL JURISDICTION. MATCH EXISTING PAVEMENT THICKNESS.
5. WWF 4x4-6/6
6. WWF NOT NEEDED FOR SIDEWALK EXTENSION.
7. SHELTER SHALL BE PLACED SO VERTICAL STRUCTURE, INCLUDING CANTILEVER OVERHANG, SHALL BE A MINIMUM 3 FT FROM FACE OF CURB.



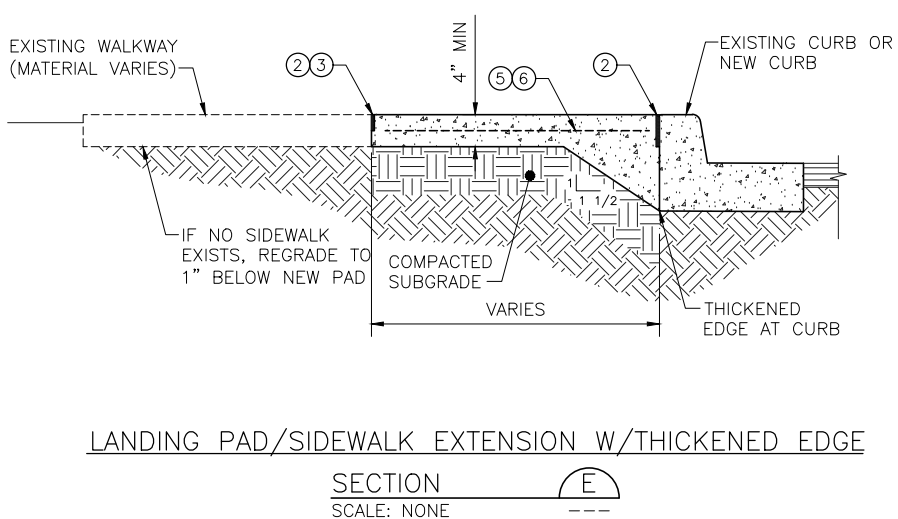
B30 SERIES SHELTER FOOTING
LONGITUDINAL SECTION A
SCALE: NONE



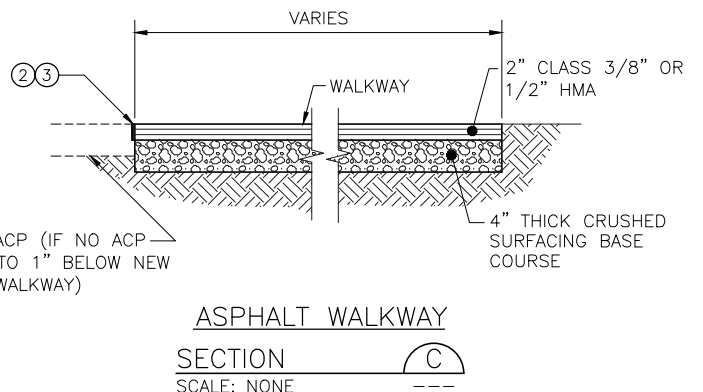
LANDING PAD
SECTION D
SCALE: NONE



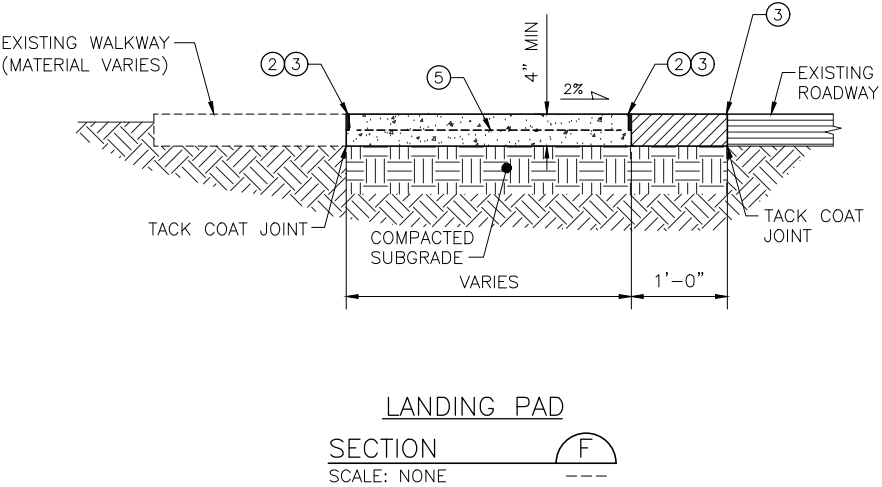
B30 SERIES SHELTER FOOTING
CROSS-SLOPE SECTION B
SCALE: NONE



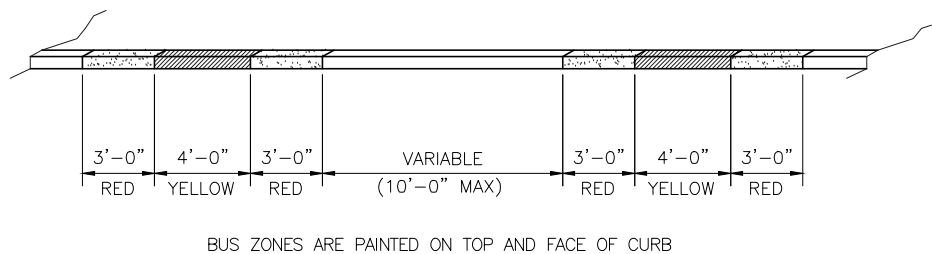
LANDING PAD/SIDEWALK EXTENSION W/THICKENED EDGE
SECTION E
SCALE: NONE



ASPHALT WALKWAY
SECTION C
SCALE: NONE



LANDING PAD
SECTION F
SCALE: NONE



BUS ZONE PAINTING
DETAIL 1
SCALE: NONE

I:\DOT\kingcounty\dot\transit\DCAD_Folders\Projects\passenger_facilities\standard_details\2021-2022\standard_details\D108.dwg | Layout: D108
 PLOTTED: May 19, 2022 9:08:45pm By: dbernini
 XREFS: KCMTD-BORDER.dwg
 IMAGES:

KCMT 2021-2022 STANDARD DETAILS					
No.	REVISION	BY	APPD	DATE	



DESIGNED: K. CHANG YUEN	APPROVED: P. ENG
DRAWN: L. ANDERSON	PROJECT NO.:
CHECKED: K. CHANG YUEN	CONTRACT NO.:
CHECKED: C. ASQUITH	



METRO TRANSIT CAPITAL DIVISION
TRANSIT PASSENGER FACILITIES - IMPROVEMENTS

B30 SERIES SHELTER FOOTING
CROSS SECTIONS, DETAILS
AND BUS ZONE PAINTING

DATE: 05/2022
DRAWING NO: D108
SHEET NO. OF 15 20